

Call 1 project submission

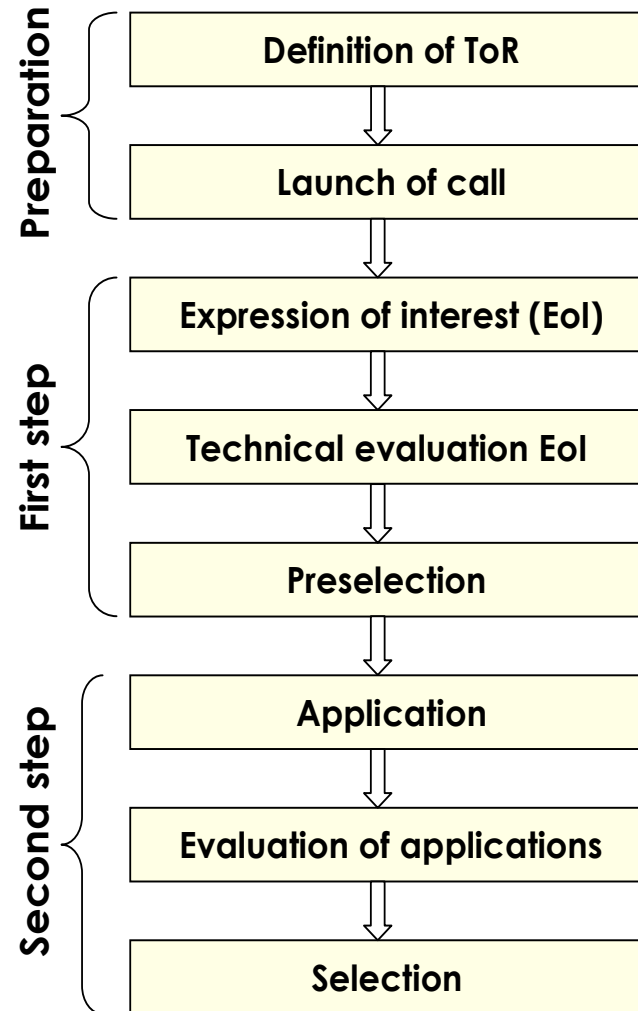
14 | 20

Ljubljana | Slovenia | 05 March 2015

Eva Stare



2 step application procedure



Calendar of the call

Step 1

25.02.2015: Opening of call (step 1- EoI)

10.04.2015, 2:00 pm: Deadline for EoI submission

Mid-June 2015: selection of EoI

Step 2

15.06.2015: Opening of submission for AF

25.09.2015, 2:00 pm: Deadline for AF submission

Early December 2015: selection of projects



Expression of Interest (EoI)

Includes key information on the project:

- Project objectives and consistency with programme ones
- Target groups
- Sustainability and transferability of main outputs and results
- Project context: positioning within wider strategy/policy + synergies with previous initiatives
- Brief description of activities
- Partnership structure
- Total budget



Complete application (AF)

- Application document include AF + partnership agreement
- Detailed description of:
 - Project's contribution to the selected programme objective
 - Partnership structure and relevance
 - Transnational approach
 - Project's objectives
 - Project's main result and outputs and their contribution to programme indicators
 - Workplan with defined work packages, activities and time schedule of the project
 - Target groups, durability and transferability of project outputs and results
 - Project budget



Submission of EoI

- On line at www.alpine-space.eu – available in two weeks
- Once registered, each applicant receives unique ID and password
- Only one version of EoI per project
- Possibility to access the EoI several times to complete information
- Must be completed and submitted within the deadline
(be aware of potential website congestion closer to the deadline!)



Offline Eol preparation

- Eol template
- Eol guidance
- Available at www.alpine-space.eu

**NO SUBMISSION
of any files!**



Eol – Eligibility criteria

- All textboxes filled in with required information
- In English
- Minimum partnership requirements are met
- Established contact of the applicant with ACP (lead partner)

If not **all** of the eligibility criteria are met
→ Eol rejected and not further evaluated



Eol - evaluation and selection

- Evaluation carried out by JS + support from contact points (national checks)
- Selection by task force appointed by programme committee
- After selection by TF: managing authority notifies applicants, eventually with recommendations
- Start of step 2 for successful applicants (application form)



Eol – selection criteria

Assessment criteria cluster	Points
Project's context and cooperation character	30
Project's contribution to programme's objectives, expected results and outputs	40
Partnership relevance	20
Work plan	10
Total	100



Call 1 programme expectations

14 | 20



Call 1 general framework

- Opening of the call for **priorities 1 to 3**
(specific call for priority 4 to be launched further in 2015)
- Project duration: **max 36 months** + preparation and closure phases
- Partnership: **4 to 15 partners, from at least 3 Partner States**
(of which 2 from the EU)
- Project participants: public, public equivalent bodies, private
- Budget: **no specific budget restrictions.**
Average ERDF budget in 2007-2013: **EUR 2 M**
- Co-financing rate: up to **85% ERDF**
- **Total costs principle:** sources of contribution may be public or private



Impact on policy cycle

Three types of projects according to their objectives and nature of activities and therefore their positioning in the policy cycle:

- **Strategic policy development**
analytical and research activities involving e.g. policy owners
- **Explorative and piloting activities**
development of new tools or methodologies and their testing to find most appropriate means for strategy implementation
- **Policy implementation**
focus on fully developed instruments for the concrete implementation of a policy



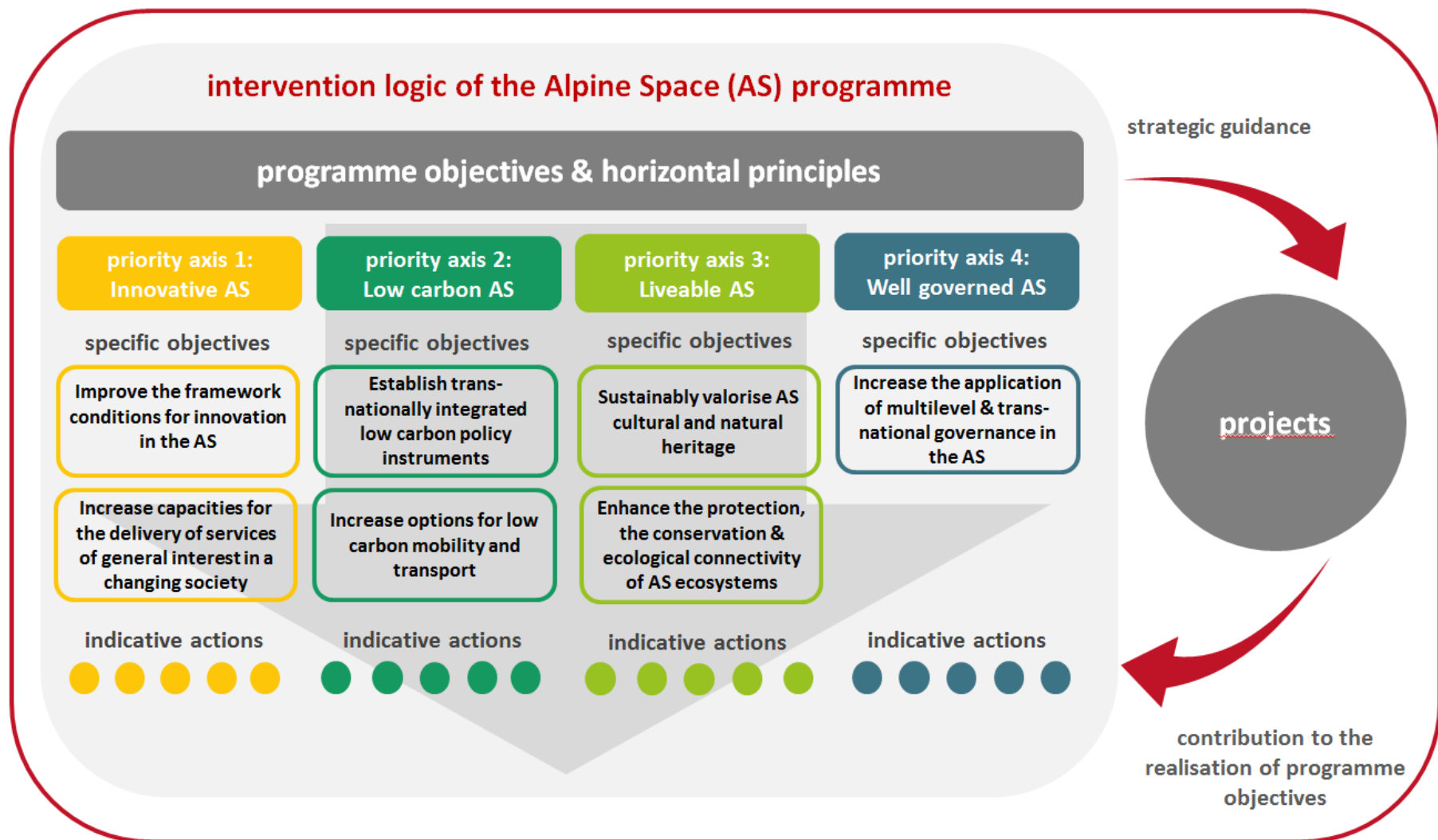
Transnational approach

Topic better addressed at the transnational level

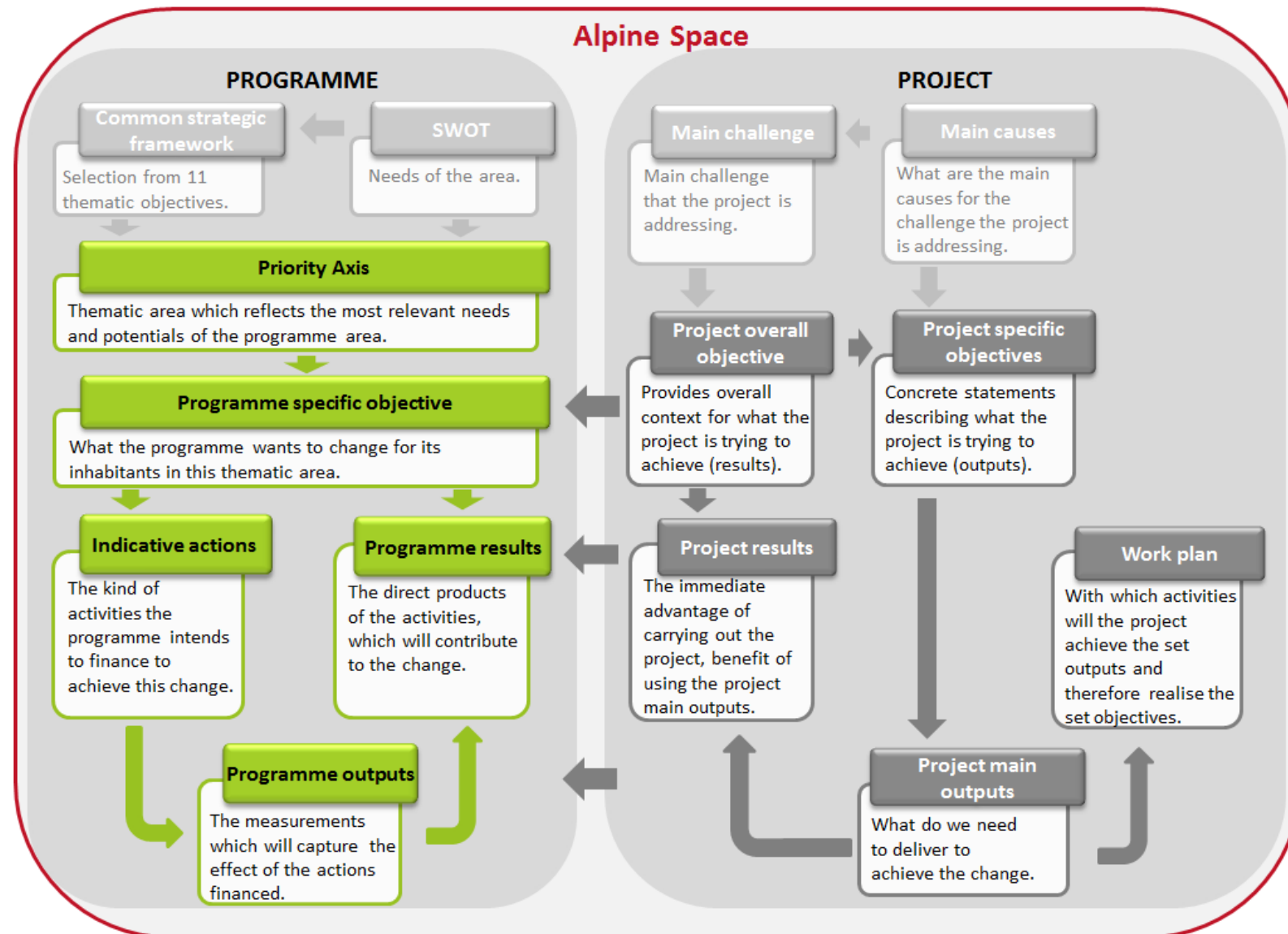
- ⇒ Does the project addresses a topic with a real transnational dimension needing transnational solutions?
- ⇒ Topic not only concerning one country or only the cross-border level
- ⇒ Not a mere collection of local/regional activities, but a real transnational cooperation and transnational added value



Consistency with ASP intervention logic



Consistency with ASP intervention logic



Types of expected outputs

- Common strategic elements
- Transnational cooperation structures
- Recommendations for policy-makers
- Guidelines for practitioners
- Methodologies, tools and decision support systems
- Pilot activities



Quality outputs and results

→ **Specific, realistic, measurable, sustainable, transferable**

- Specific link to the needs of identified target groups
- Clear impact on target areas and groups
- Bringing added value on existing structures or products
- Building on the achievements of past projects
- Realistically achievable with the project means
- Quantified using the measurement units
- Transferable beyond the project partnership
- Long term use of project outputs



Partnership / type of beneficiaries

- Public authorities
- Sectoral agencies
- Infrastructure and public service providers
- Interest groups, including NGOs
- Higher education and research
- Training centres
- Business support organisations
- SMEs
- International organisations



Partnership

- **Relevant:** role in the relevant policy field, includes key players able to address project`s objectives
- **Competent:** partners show experience and competence in line with the project`s objectives
- **Balanced:** in terms of geographical coverage, sectors and levels
- **Targeted:** early involvement of relevant stakeholders



Further information

Content

- Cooperation programme 'Alpine Space programme 2014-2020'
- Strategy development project Expert report

Technical

- Terms of reference for 1st call
- EoI guidance and EoI template
- Project implementation handbook (factsheets on who can participate, what can be co-financed, selection criteria...)

available at
www.alpine-space.eu



Any questions?

